

Learning Support Year 7 Transition Booklet



CONTENTS

Welcome to the Arnewood School	3
Arnewood School Staff	4
Learning Support Team	5
What is Learning Support?	6
Where is Learning Support?	7
My First Day	8
The Arnewood School Day	9-10
What will your teachers be like?	11
Home Learning	12
Student Classroom Agreement & Culture of Learning	13
Mobile Phones	14
School Uniform	15
School canteen	16
What happens if you feel unwell in school?	17
Does the school have a library?	18
The Zone	19
Fire Bells / School Trips / Visitors	20
Transport	21
School Map	22

WELCOME

TO THE ARNEWOOD SCHOOL

Learning Support



Dear Future Year 7 Student,

We are so excited to welcome you to The Arnewood School this September!

Starting a new school is a big step, and we want you to know that you are not alone — we are here to help you every step of the way.

At Arnewood, we believe that everyone should feel safe, happy, and confident in their learning. Our **Learning Support Team** is ready to help you settle in, find your way around the school, and get used to your new routines. Whether it's helping you with your learning, showing you where your next lesson is, or just being there for a friendly chat—we're here to help!

We understand that change can feel a little scary, but we promise to be kind, patient, and supportive as you begin this exciting journey. You'll have lots of opportunities to make new friends, try new things, and discover what makes you shine.

We can't wait to meet you and start this adventure together. You are already a valued part of our Arnewood family.

With warm wishes,
Mrs Battrick-Mantell
SENDCo



ARNEWOOD SCHOOL STAFF



This is Mr Vibert

He is the Head of Year 7

He helps to ensure that all Year 7 pupils:

- Do their best
- Get on well together
- Are happy and safe in school



This is Mrs Young

She is the Assistant Head of Year 7

She provides pastoral support to all Year 7 pupils:

- Talk through problems
- Sort out any friendship issues
- Help with attendance concerns
- Supports all the Year 7 tutors

Both Mr Vibert and Mrs Young are based in the Year 7 Office

These are your Year 7 Tutors

You will see your tutor every day at 8.30am for Tutor Time. Your tutor will help you if you have a problem, or to show you where you need to go on your timetable, you should let your tutor know if you have any worries or concerns about anything at school.

07JPN

Mrs Preston & Mr Elkington



07IPS

Dr Parkes & Mr Elkington



07MKY

Mr Keeley



07MCT

Miss Craft



07LBE

Miss Briscoe



LEARNING SUPPORT TEAM



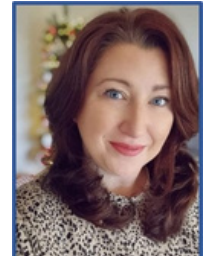
This is Mrs Battrick-Mantell

She is our SENDCo and she is in charge of the Learning Support department



This is Mr Lewis

He is our Learning Support Co-ordinator.
He looks after the staff and students who come to Learning Support. He talks to students who are worried about anything in school and offers advice and support.



This is Mrs Buchan

She is our SEND Admin & Support Co-ordinator. She supports the team with all the admin and communication needs as well as supporting students who visit Learning Support

Learning Support Assistants

We have a fantastic team of Learning Support Assistants (LSA's) in our department. The LSA's are here to help you with your learning. This might be whilst you are in lessons, helping you understand what the teacher has asked you to do, they might help if you need to take a movement break, or they might be leading some small group work that you are involved in such as Speech and Language Therapy, ELSA or Reading. Please do ask any one of our LSA's if you need help with anything. **Remember - it's okay to ask for help!**



Mrs Little



Mrs Tumilty



Miss Freemantle



Miss Adams



Mrs Seal



Mrs Shean



Mrs Glen



Mrs Helsby



Mrs John



Miss Nisbett



Mrs Wood



Mrs Grantham-Herbet



Ms Bettles



Mrs Gates



Mrs Bartlett



Miss Applin



Mrs Timms



Ms Crighton

WHAT IS LEARNING SUPPORT?

The Learning Support team is here to help you with your learning. You might see a Learning Support Assistant (LSA) in some of your lessons. They're there to support you and your classmates with your work. Sometimes, you might also go to one of the Learning Support rooms to work in a smaller group.

LSAs also run special groups to help with things like Speech and Language or sensory activities. If you're going to be part of one of these groups, we'll let you know when it will happen.

Some of our LSAs are trained to help you understand your feelings. You might join a group where you can learn how to manage emotions like feeling worried or upset.

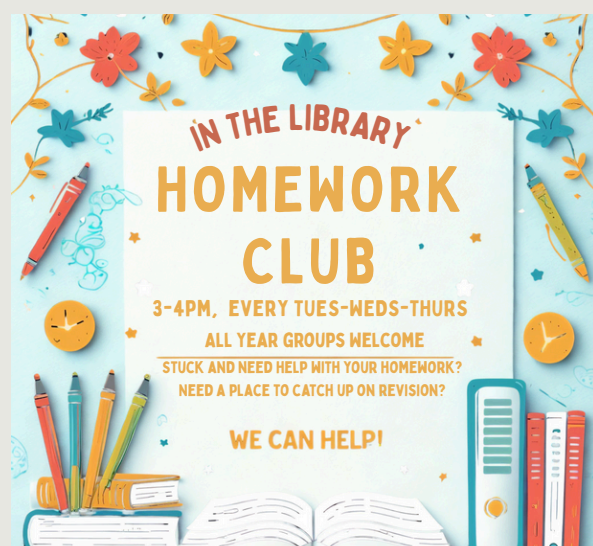
The Harbour is also open during break and lunchtime if you'd rather stay inside than go out to the playground. There's always an LSA there, and they often run fun games like Uno or Dominoes.

If you ever have a problem or need help, just come and see us in Learning Support. We're always happy to help!



What else can Learning Support help with?

Learning Support run the Homework Club which takes place after school in the Library, **every Tuesday, Wednesday and Thursday from 3.00pm - 4.00pm**. There is no need to sign up for Homework Club and you can come as many times a week as you like.



WHERE IS LEARNING SUPPORT?

Learning Support is here to help you feel confident and supported at school. It's located in the main school building and has lots of helpful spaces for different kinds of support.

Ground Floor:

On the ground floor, you'll find the main Learning Support hub. This includes:

- **The Harbour** – a calm and quiet space where you can go if you need a break from your lesson.
- A Literacy classroom – where small group lessons take place to help with reading and writing.
- The Learning Support offices – where you'll find Mrs Battrick-Mantell, Mr Lewis, and Mrs Buchan. They're always happy to help.

First Floor:

Upstairs, there are more spaces designed to support you:

- **The Lighthouse** – a quiet dedicated area for small group intervention work and focused learning
- The ELSA suite – where you can talk to someone if you're feeling worried or need emotional support.
- The Sensory Room – a calm space to help you feel relaxed and comfortable.

To use any of these spaces, you'll need permission from a member of the Learning Support team.

How to Get to The Harbour

If you need to go to **The Harbour**, please use the **Student Entrance**. This is the outside door between the main building and the Elizabeth Cook building. It's important **not** to go through the Literacy classroom or the office door in the main corridor.



MY FIRST DAY

4th SEPTEMBER 2025

Your first day at secondary school will be one you will always remember, so follow these steps to make it a success!

The night before:

- Have your bag packed
- Have your named uniform laid out ready
- Check that you know how you are getting to school and who you are travelling with
- Set your alarm to allow you plenty of time to get up and ready

On the day:

- Start your first day with a good breakfast and leave the house ready arrive at school at 8.20am
- Remember to bring your packed lunch with you, or you will be able to buy your lunch from the canteen if you prefer.
- When you arrive, head up the main drive and follow the path around to the right, here you will find the playground. The school only has Year 7 and Year 12 (our new Sixth Form students) present for the first day, so it won't be too busy.
- Your Head of Year and Tutor will meet you there and ask you to line up with your tutor group.
- You will have a welcome assembly with your year group, before spending the rest of the morning with your tutor. It is important to listen carefully to all the information being given.
- Your tutor will take you on a tour of the school to allow you to become more familiar with where everything is.
- You will be given your timetable and there will be plenty of people around to point you in the right direction.
- Remember to keep smiling! Everyone else is in the same boat as you and will feel just as nervous.
- After the morning with your tutor, it will be time for your first lessons.
- On your first day you will have 2 lessons before the school day finishes at 3pm.



THE ARNEWOOD SCHOOL DAY

The school day at Arnewood will feel quite different to your junior school day - but don't worry, you will soon get the hang of it!

Every morning at 08.30am you will start your day with with your Tutor and tutor group for registration. This will be in your tutor room most days, but once a week you will have assembly in the main hall and your tutor will take the register there on those days.

During Tutor Time, you will receive important messages about different things, so remember to listen carefully.

You will also do activities like Tutor Time Reading, this is where you will have a book to read along with as your Tutor reads out loud to the whole class. This book will change each half term. By the end of Year 7 you will have read 6 whole books!!

Some of the books you will read in your Year 7 Tutor Reading Time are shown below - which one do you think will be your favourite?



THE SCHOOL DAY

These are the times of the school day. We have school bells throughout the day, but you must always wait for the teacher's permission before leaving the classroom.

0830 - 0900	Tutor Time (or assembly, once a week)
0900 - 1000	Lesson 1
1000 - 1100	Lesson 2
1100 - 1120	BREAK TIME
1120 - 1220	Lesson 3
1220 - 1320	Lesson 4
1320 - 1400	LUNCH BREAK
1400 - 1500	Lesson 5
1500	END OF SCHOOL DAY

WHAT WILL LESSONS BE LIKE?

There are lots of different lessons at The Arnewood School, and you will have a timetable to show you what lessons you have each day and where you need to go for each lesson.

Your timetable will include lessons such as:

English	Geography	History	Technology
Maths	PSHE	PE	Music
Science	Religious Studies	French or German	Drama

WHAT WILL YOUR TEACHERS BE LIKE?

You will have lots of different teachers and you may have more than one teacher for a subject.

You are expected to always behave well in class and follow all instructions given by the teacher or any other member of staff. You are expected to be polite and respectful to all students and staff at all times.

The main rules of classroom behaviour are:

- Arrive on time to all lessons with a positive mindset and attitude.
- Bring the correct equipment for the lesson, such as a pen, pencil and books.
- Sit where the teacher asks you to sit
- To promptly follow any instructions given to you
- Not to talk when others are contributing to the lesson or when the teacher is talking
- Not to eat in the classroom and only drink water with the teacher's permission
- To complete classwork and homework to the best of your ability

This means you should:

- Listen carefully and do what your teachers ask you to do.
- Do your best work at all times
- Listen when someone is talking
- Put your hand up if you want to say something or answer a question and wait for the teacher's permission before speaking
- Be kind, helpful and always speak respectfully to everyone
- Have your books, pencil case and all the things you need out on the table ready for the start of each lesson.

This is so that everyone can do their best work and get on well together.



HOME LEARNING

Home learning is an important part of your education. It helps you practise what you've learned in class so that you can remember key knowledge and build your skills further. At The Arnewood School, we use a step-by-step approach to home learning that grows as you move through each year.

Year 7 – Starting with Core Subjects

In Year 7, you'll focus on your core subjects: English, maths, and science. Your home learning for these subjects will be set using an online platform called **Sparx**. You'll get your login details in September so you can start using it.

You'll also have some grammar home learning for the modern foreign language you'll be studying.

Year 8 – Adding More Subjects

When you move into Year 8, you'll continue with your Sparx homework and start getting home learning tasks for History and Geography too.

Year 9 – Creative Projects

In Year 9, you'll still do your Sparx and humanities homework, and you'll also be given a project-based task for your Creative subject option – this could be something like art, music, or design.

Years 10 & 11 – GCSE Preparation

By the time you reach Years 10 and 11 (Key Stage 4), your home learning will include tasks for your core subjects and all the subjects you've chosen for your GCSE exams.



THE ARNEWOOD SCHOOL CLASSROOM AGREEMENT

Ready
Respectful
Safe

We will arrive to lessons on time.

We will have the correct uniform and equipment.

We will complete all classwork and homework to the best of our ability.

We will follow instructions the first time.

We will allow everyone to contribute during lessons.

We will be tolerant of everyone's beliefs and opinions.

We will sit appropriately in the correct seat during lessons.

We will use the one-way system at all times.

We will keep the school site free of litter and vandalism.



OUR CULTURE OF LEARNING AT THE ARNEWOOD SCHOOL

REMIND

MOVE

REMOVE

1.
**VERBAL
REMINDER**

2.
**MOVEMENT
IN CLASS**

3.
**REMOVAL
FROM LESSON**

Every student has the right to learn.

If your behaviour is preventing this or you are failing to follow instructions then the above process will be used.

Certain behaviours or circumstances may require removal from class immediately.



Be Ready



Be Respectful



Be Safe

MOBILE PHONES IN SCHOOL

We know that you may find it useful to bring a mobile phone into school. For example, those involved in after school clubs or fixtures or those with a particularly long journey home. In these incidences, the mobile phone must remain switched off and in your bag.

They are not allowed for use during the school day, including break time and lunch time.

You are responsible for the safe keeping of your phone and the school accepts no responsibility for theft, loss or damage.

If you are caught using your mobile phone during the school day it will be confiscated and taken to the Finance Office where you can pick it up at the end of the day



Students need to remember



See it, hear it, lose it!!

SCHOOL UNIFORM

WEAR YOUR UNIFORM WITH PRIDE



At The Arnewood School we like all our students to look smart and to dress appropriately. Make sure you know the rules about uniform, including shoes and jewellery. A full list is available on our [website](#)

Make-up, false lashes, false nails and nail varnish are not to be worn in school and you will be asked to remove these items if you wear them to school.

PE KIT

- Plain black shorts (school skort with logo available)
- Arnewood School PE leggings (optional) - no other leggings are appropriate
- School polo t-shirt (fitted available)
- School winter long sleeve top (for outdoor activities and cold weather)
- Studded footwear, shin pads and gum shield (for specific activities)
- Plain black swimming costume (girls) plain black swim shorts - no longer than knee length (boys)



All items of clothing, including your PE kit should be clearly named

SCHOOL CANTEEN

The school canteen is in the main building. It is open to students before school for Breakfast Club, where students can get free toast. Other breakfast items are available to purchase.

At break time, you will be able to buy snacks such as sausage rolls, pastries, pizza etc.

At lunch time there is a hot meal offering as well as jacket potatoes, pizza, sandwiches and salad and pasta pots.

As well as the main canteen, there is the Snack Shack kiosk where food items can be bought at break and lunchtime. The Snack Shack is located in the playground by the basketball court.

Alternatively, you can bring in your own packed lunch to eat either in the hall or outside.

The canteen is “cashless”. The tills use a biometric system that will read your thumb print and then money is charged to your account when you buy something from the canteen or Snack Shack. Your parents/guardian can top up your account via the Parent Arbor App.



FREE SCHOOL MEALS

Eligible students will be set up on the school system and payment automatically arranged. If you have any questions regarding this, please contact the finance office.

WHAT HAPPENS IF YOU FEEL UNWELL IN SCHOOL?

We are very lucky to have two Welfare Assistants on site at Arnewood School. If you have a medical condition, it is a good idea to find out where the Medical Room is and introduce yourself to **Miss Freeman** or **Miss Fuller**.

If you feel unwell or have hurt yourself whilst at school, tell your teacher who will contact the Medical Team for advice and will let you know when you can go to the Medical Room. For your own safety, you must never just take yourself home! The medical team must call home and arrange for someone to come and collect you.



Miss Freeman



Miss Fuller

Your Own Medicine

If you need to take medicine whilst at school you need to make sure that the medical team knows.



Your parents/carers must fill in a medication consent form and bring it into school along with your prescribed medicine. Make sure it is clearly labelled with your name and tutor group and take it to the Medical Room. They will keep it safe for you.

DOES THE SCHOOL HAVE A LIBRARY?

Yes! And it is open before tutor time, at break time and lunch time and also after school.

We have a fantastic library here and it's all yours! You can borrow up to 3 books at a time, however it is important to return books to our librarian, Mrs Atkins and not just to put them back on the shelves yourself.

There is a wide selection of books available and Mrs Atkins will be happy to help you find one that you will enjoy.



Mrs Atkins



There are also opportunities to become a Library Monitor and help Mrs Atkins keep the library running smoothly - if that is something you would like to do you can let Mrs Atkins or Mrs Battrick-Mantell know you are interested in applying.

Remember, we ask everyone to respect others who have come to the library to study and read - libraries are lovely quiet spaces!



THE “ZONE”

As well as The Harbour and the Library, we are very lucky to have access to a room at lunchtimes called **The Zone**.

This is a quiet space where students with passes can go if they feel too overwhelmed by the busy hustle and bustle of lunchtimes.

Access to the Zone is strictly by pass only, so if you feel you would need access to this space, please speak to Mr Lewis.

**A calm and relaxed space to unwind and
escape the hustle and bustle of lunchtime!**

THE ZONE



**Access Pass required - please speak to Mr Lewis
in Learning Support for an invite.**

FIRE

When the school bell rings continuously, this is the Fire Warning Bell. When you hear this, you will be told to leave the building. You must walk in silence.

You will be told where to go and you will need to line up with your tutor group. Always do as you are told in a fire drill as one day it might be the real thing.



SCHOOL TRIPS

There are lots of opportunities for you to go on school trips, from residential to theatre trips. It is important that whenever you are on a school visit, you must always behave well. If not, you may not be allowed on other school visits.

SCHOOL VISITORS

We often have people visit our school and they will always wear a visitor badge or sticker. Please be polite at all times and make them feel welcome.



TRANSPORT



BUSES

Make sure you arrive promptly at the bus stop and always carry your pass. We expect all students to abide by the bus company's rules whilst travelling on the bus. Rudeness to the driver or other passengers will never be tolerated and you could even have your bus pass removed.

BICYCLES

To be able to ride your bike to school you must first get a permit. These forms are available from the Finance Office and must be signed by your head of year. You **MUST** wear a helmet! Bicycles should be securely stored in our bike shed and NEVER ridden through school.

SAFETY AND SECURITY CHECK:

- Do your brakes work?
- Is your saddle the right height?
- Have you got a bell?
- Are your lights working?
- Is your tyre pressure correct?
- Do you have a sturdy lock?



**PLEASE DO NOT BRING SKATEBOARDS
ONTO THE SCHOOL SITE**

CAMPUS MAP

