

2025

EXPLORE THE PATHWAYS TO SUCCESS



THE ARNEWOOD SCHOOL

YEAR 9 GCSE OPTIONS GUIDE



Dear Parent/Carer,

We offer a number of pathways, **this booklet describes the pathways available**. Each pathway has been designed with further continued routes of study in mind. Students have been advised of their pathway via Firefly where they have access to the appropriate options form.

Both pathways allow students to select up to four GCSE subjects or similar in addition to Core GCSEs (English Language, English Literature, Mathematics and Combined Science). Pathway 1 allows students to select GCSE subjects that require a high mathematical ability to access grades 4 and above, pathway 2 allows students to select GCSE subjects and other BTEC, or vocational GCSE.

Students on Pathway 1 are encouraged to take a modern foreign language. For a student to obtain the English Baccalaureate (Ebacc), they must gain a GCSE grade 4 or better across a core of academic subjects: English; Maths; History or Geography; the sciences (including Computing); and a language.

Students should arrive at their final choices, taking note of their:

- ability
- interests
- further study at Arnewood Sixth
- career ambitions

I encourage students and parents/carers to contact subject staff with questions about GCSE options following exploring the information pages on firefly.

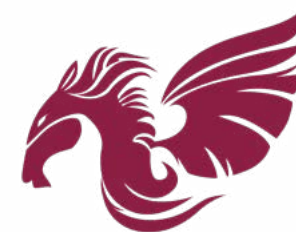
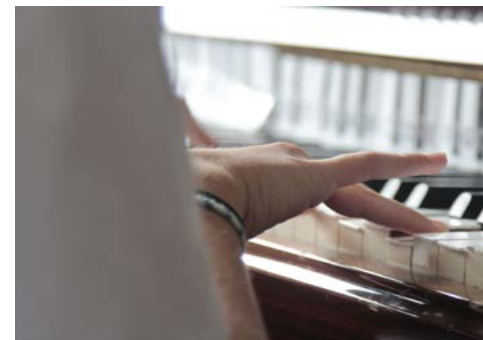
If there are questions regarding the options process please visit the FAQs section on the KS4 Options website page.

I would like to thank you in advance for support students and their decisions,

Yours Faithfully,

Mr T Merrick

Deputy Headteacher
Curriculum and Staffing



THE ARNEWOOD SCHOOL
AMBITION | SUCCESS | TOGETHER

GENERAL ADVICE FOR STUDENTS

Do not rush into a decision. Use the resources and information provided to inform your decision.

Make a list of all the careers that would interest you. Discuss these with your parents and your tutor.

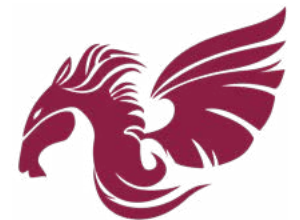
Speak to your Head of Year, your form tutor and your subject teachers for advice and listen carefully at the special pathways assemblies. Think about what courses you might want to study in sixth form. Use unifrog to give you guidance on how to achieve your desired career.

Attend options evening Wednesday 26th February. Your initial choices must be made by Thursday 6th March.

Be prepared to discuss your choices with your tutor, your Head of Year, Mr Merrick or Mr Anderson.

Minor changes which fit in with the timetable will be considered by Mr Merrick up until 23rd May 2025. After this point changes will only be made in September 2025, if essential.

Visit the [Arnewood Sixth website](#) to explore future possibilities.





KS4 CURRICULUM

The KS4 curriculum is made up of compulsory and optional elements. The compulsory subjects are prescribed by the National Curriculum. The optional subjects are those that parents and students can choose together.

Compulsory Subjects

The following subjects make up the compulsory KS4 curriculum.

- English and English Literature
- Mathematics
- Combined Science
- Personal, Social and Health Skills (PSHE), and Religious Education
- Physical Education

Core subjects are identified in the subject descriptions in this pack.

DISCLAIMER

This document represents the proposed changes to the current specifications. However, some of these have yet to be confirmed by OFQUAL (Office for Qualifications and Examinations) and so may change. Should you have any questions regarding this, please speak to Mr Merrick.

Should you have any further questions, please do not hesitate to contact the Head of Centre of Learning, found on each course sheet, or contact Mr Merrick directly at t.merrick@arnewood.hants.sch.uk



PATHWAY 1 - OPTION FORM

This form is designed to assist your planning of options subjects. The form that needs to be submitted will be set as a firefly task following options evening on Wednesday 26th February.

Please note that there are limited places on some courses. We will do our best to ensure students are able to study the options they wish to, but this may not be possible. We will contact you if there is an issue.

The deadline for completing the online (Firefly) form is Thursday 6th March 2025.

1. Please pick **ONE Option** from each column.
2. If you wish to achieve the English Baccalaureate, you are **advised** to select at **LEAST ONE HUMANITY** (Geography or History) **AND** at **LEAST ONE LANGUAGE** (French or German). This is a status favoured by universities.
3. Art and Design, Textiles and 3D Design are identical qualifications delivered through different specialisms. Therefore you can only select **ONE** of these subjects.
4. If you have any questions or concerns with selecting your options, you should contact to Mr Merrick (t.merrick@arnewood.hants.sch.uk) **before the deadline of Thursday 6th March.**

	Option 1	Option 2	Option 3	Option 4	1 st Reserve	2 nd Reserve
History						
Geography						
French						
German						
Triple Science						
Computer Science						
Music						
Drama						
Food Technology						
I-Media						
GCSE Physical Education						
Philosophy and Ethics						
Media Studies						
Childcare						
Art and Design						
Textiles						
3D Design						

PATHWAY 2 - OPTION FORM

This form is designed to assist your planning of options subjects. The form that needs to be submitted will be set as a firefly task following options evening on Wednesday 26th February.

Please note that there are limited places on some courses. We will do our best to ensure students are able to study the options they wish to, but this may not be possible. We will contact you if there is an issue.

The deadline for completing the online (Firefly) form is Thursday 6th March 2023.

1. Please pick **ONE** option from each column.
2. Art and Design, Textiles and 3D design are identical qualifications delivered through different specialisms. Therefore you can only select **ONE** of these subjects.
3. If you have any questions or concerns with selecting your options, you should contact to Mr Merrick (t.merrick@arnewood.hants.sch.uk) **before the deadline of Thursday 6th March.**

	Option 1	Option 2	Option 3	Option 4	1st Reserve	2nd Reserve
History						
Geography						
French						
German						
Music						
Drama						
Food Technology						
I-Media						
GCSE Physical Education						
Philosophy and Ethics						
Media Studies						
Childcare						
Art and Design						
Textiles						
3D Design						
Construction						
Health and Social Care						



SUBJECTS

ENGLISH LANGUAGE; ENGLISH LITERATURE (EBACC CORE SUBJECT)

Course Outline

All students will follow both the AQA GCSE English Language and English Literature courses (worth two GCSEs). These courses are linear, meaning that students will sit final examinations at the end of Year 11. There is no written coursework/controlled test element.

In English Language, students will develop written and comprehension skills working towards two final examination papers: Paper 1 - Explorations in Creative Reading and Writing (responding to a fiction text/writing to narrate or describe); Paper 2 - Writers' Viewpoints and Perspectives (responding to a non-fiction text/writing to present a viewpoint).

In addition, all students will complete an internally assessed Speaking and Listening presentation. This does not count towards the English Language GCSE total marks but must be completed and is given a separate grade (Distinction, Merit, Pass).

In English Literature students will develop analytical skills working towards two final examination papers which will cover a Shakespeare text, a 19th century novel, a modern text (prose or drama) and poetry.

The department is committed to developing students' skills in reading, writing, comprehension and textual analysis. The curriculum is designed to prepare students for GCSE exams by focusing on building up the skills students need to refine and develop in the first half of the course before concentrating more on exam style and content later on.

Assessment

One tier of entry only. Two terminal exams for English Language (1hr 45 mins). Two terminal exams for English Literature (1hr 45 mins and 2hrs 15 mins). Grades will be awarded from 9 to 1 (9 being the highest).

Qualification Level:
GCSE

Examination Authority:
AQA

Contact Teacher:
Mrs J Preston

j.preston@arnewood.hants.sch.uk

Sixth Form Study & Careers

English Language, English Literature, Media Studies AS and A Level

These courses are suitable for any communication-oriented profession such as the media, teaching, law, journalism and administration.



Course Outline

The study of a modern language is an important part of the Arnewood curriculum. Students are very strongly encouraged to study a modern language in Years 10 and 11. A qualification in a modern foreign language is considered essential for some university courses, not only those involving under-graduate language studies.

The course in French concentrates on communicative skills: listening, speaking, reading and writing and provides many transferrable skills which are desirable in the workplace

Grades are awarded based upon performance in each of the skills with each skill equally weighted at 25%. Reading, writing and listening will be externally assessed exams. Speaking assessments will be administered at the end of the course in a one-off examination. All skills will be taken at the same tier, namely Higher or Foundation.

In order to achieve their potential students are required to complete ongoing homework tasks, be prepared to participate in communicative tasks and learn vocabulary and grammar regularly.

Assessment

Assessment will be via final examinations in listening, speaking, reading and writing, each with equal weighting.

Qualification Level:
GCSE
Pathway 1 and 2

Examination Authority:
AQA

Contact Teacher:
Mrs M Witham

m.witham@arnewood.hants.sch.uk

Sixth Form Study & Careers

French at AS and A Level. Languages can lead to specialist careers such as translation and teaching but linguists are highly sought after in countless professions. Languages pair well with all other subjects and develop communication, problem solving and inference skills amongst many others.



Course Outline

The GCSE Geography course offers students the opportunity to examine many of the issues which are important and, above all, relevant to young people as they grow up in the world today. The problems we tackle are very diverse: for example the impacts of erosion on the local coastline, our response to hazards such as cyclones and the problems of developing countries on an international scale. Students who choose to take Geography will be expected to display a keen interest in such matters and in the topical issues of the day which relate to our work. There will be a balance between the physical, human and environmental aspects of the subject.

There are 3 main components in the course. They are:

Component 1

The Physical Environment – Students will learn about our changing river and coastal landscapes. Furthermore, students will analyse climate change, study issues surrounding cyclones and drought and learn how people help to manage our planet's ecosystems.

Component 2

The Human Environment – This includes students studying the changing nature of our cities, analysing global development and assessing our energy needs.

Component 3

Geographical Investigations and Fieldwork – Students will gain a wide range of map, atlas, cartographic, numerical and enquiry based skills. Furthermore, students will be required to undertake two days of fieldwork based on topics learnt in class.

Assessment

3 written exams at the end of Year 11. There is no coursework.

Paper 1 – Physical Environment; Paper 2 – Human Environment; Paper 3 – Geographical Investigations and Fieldwork Skills.

Qualification Level:
GCSE
Pathway 1 and 2

Examination Authority:
Edexcel A

Contact Teacher:
Mr S Nicholson
s.nicholson@arnewood.sch.uk

Sixth Form Study & Careers
Geography is an extremely broad-based, topical subject welcomed and looked highly upon as a facilitating subject by universities and by employers because of the understanding and awareness of present-day issues that it develops, together with important transferable skills. It also provides an excellent foundation for the study of A Level Geography at Arnewood as the courses are chosen to ensure continuity and progression throughout a student's school career.



Course Outline

The study of a modern language is an important part of the Arnewood curriculum. Students are very strongly encouraged to study a modern language in Years 10 and 11. A qualification in a modern foreign language is considered essential for some university courses, not only those involving under-graduate language studies.

The course in German concentrates on communicative skills: listening, speaking, reading and writing and provides many transferrable skills which are desirable in the workplace.

Grades are awarded based upon performance in each of the skills with each skill equally weighted at 25%. Reading, writing and listening will be externally assessed exams. Speaking assessments will be administered at the end of the course in a one-off examination. All skills will be taken at the same tier, namely Higher or Foundation.

In order to achieve their potential students are required to complete ongoing homework tasks, be prepared to participate in communicative tasks and learn vocabulary and grammar regularly.

Assessment

Assessment will be via final examinations in listening, speaking, reading and writing, each with equal weighting.

Qualification Level:
GCSE
Pathway 1 and 2

Examination Authority:
AQA

Contact Teacher:
Mrs M Witham
m.witham@arnewood.hants.sch.uk

Sixth Form Study & Careers
German at AS and A Level. Languages can lead to specialist careers such as translation and teaching but linguists are highly sought after in countless professions. Languages pair well with all other subjects and develop communication, problem solving and inference skills amongst many others.



Course Outline

At The Arnewood School we follow the OCR Specification B (Schools History Project). Students study three historical eras (Medieval, Early Modern and Modern) and will investigate three different time scales. At the end of the course they sit three exams on the following topics:

Paper 1: British History (Crime and Punishment c.1250 to Present);

Paper 2: World History (The Making of America 1789-1900 and Life Under the Nazis 1933-1945);

Paper 3: History Around Us (The study of Portchester Castle)

Students will be assessed by a mixture of extended answers and shorter answers. These will assess their historical skills and understanding such as recalling, selecting and organising their knowledge; analysing key concepts and key features; and analysing historical sources and interpretations.

To support your learning of the topics the history department runs site visits to Portchester Castle and Auschwitz in Poland.

Assessment

3 written examinations

2 (1 hour 45 minutes)

1 (1 hour)

Qualification Level:
GCSE
Pathway 1 and 2

Examination Authority:
OCR

Contact Teacher:
Mr J Kinnison

j.kinnison@arnewood.hants.sch.uk

Sixth Form Study & Careers
History/Government & Politics, AS
and A level
This will support careers in the
media, law, business, education,
and others.



Course Outline

The Maths course is based on the Edexcel Mathematics examinations. Students enjoy a high level of success and the work covered is both stimulating and relevant.

The most able students will be exposed to some A Level topics while studying towards their GCSE. There may also be the opportunity for some students to study the Edexcel Level 2 Extended Maths certificate, which is an excellent preparation for further studies in Maths.

Students from sets 1 and 2 are usually entered at the Higher Tier of GCSE, grades range from 9 - 3. Those students in sets 3, 4 and 5 are usually entered for the Foundation Tier where the grades range from 5 - 1.

All students in Years 10 and 11 study a pathway of work dependent on their ability group. A collection of work is studied and then assessed every term. As the term progresses, students are expected to retain all previous topics taught and the assessments will reflect this expectation. Unit tests will also be completed as the term progresses, so that students clearly know which areas of Maths to improve upon.

Every attempt is made to provide individual students with a course that is both challenging and attainable.

Assessment

Two tiers of entry, higher and foundation, each with 3 x 1½hr examinations, each worth an equal percentage of the total mark. Calculators are not allowed in one exam.

Qualification Level:
GCSE

Examination Authority:
Edexcel

Contact Teacher:
Miss G Birch
g.birch@arenwood.hants.sch.uk

Sixth Form Study & Careers
Maths and Further Maths,
AS and A Level.

This will support careers in finance, computing, business, medicine, engineering, education, scientific research and all science related careers.



SCIENCE, COMBINED (EBACC CORE SUBJECT)

Course Outline

Students will follow the Combined Science course which will lead to two GCSE qualifications and prepare and enable them for AS and A Levels.

The Combined Science GCSE includes the study of Biology, Chemistry and Physics.

The Biology topics include: cells, transport systems, health, disease and the development of medicines, coordination and control, photosynthesis, ecosystems, inheritance, variation and evolution.

The Chemistry topics include atomic structure and the periodic table, structure, bonding and the properties of matter, chemical changes, energy changes, the rate and extent of chemical changes, chemical analysis, earth and atmospheric science.

The Physics topics include: energy, forces and motion, waves in matter, light and electromagnetic waves, electricity, magnetism and electromagnetism, the particle model of matter and atomic structure.

Assessment

Assessment is by terminal examinations only. There are 6 papers: 2 Biology; 2 Chemistry and 2 Physics. Each will assess knowledge and understanding from distinct topic areas. Each exam lasts for 1hr 15.

Qualification Level:
GCSE

Examination Authority:
AQA

Contact Teacher:
Mr J. McGregor

j.mcgregor@arnewood.hants.sch.uk

Sixth Form Study & Careers
Biology, Chemistry and Physics, AS
and A Level.
This will support careers in
Medicine, Engineering and any
career that requires
logical thinking.



**Qualification Level:
Compulsory lesson**

**Pathways to success
Performance, Leadership
and Recreation**

**Contact Teacher:
Mrs M Elliott**

m.elliott@arnewood.hants.sch.uk

Sixth Form Study & Careers

BTEC Sport Level 3; Physical
Education, AS and A Level
Sport and leisure industry, travel
and tourism, teaching.

Course Outline

Students, within this compulsory element of Physical Education, will be moved into pathways that best suit their abilities and interests. Students will be taught to develop, select and apply skills, evaluate their own and others' performances as well as being shown the principles of health and fitness. They will be given the opportunity to undertake a variety of roles such as performer, coach, choreographer, leader and official.

Students will learn how to remain healthy and fit and it is hoped they will have the confidence to pursue sports activities out of school and in later life. All students must wear the correct PE kit for the activities that they undertake.

Assessment

No external assessment.



PSHE AND RELIGIOUS STUDIES (CORE SUBJECT)

Course Outline

The Religious Studies and PSHE course will be taught once a week in Year 9 & 10. RS Core will be studied in the Summer Term of both years.

PSHE will continue in year 11. Both subjects play a key role in preparing students for their adult life.

Religious Studies

Please note that this compulsory course should not be seen as a replacement for the full course GCSE examination (please see separate details for Religion, Philosophy and Ethics GCSE). This is particularly the case where students have an interest and aptitude for the subject.

Students will study two units in Years 9 and 10. The course will build on material covered at Key Stage 3. It covers 'The Problem of Evil' with a project on the Holocaust (year 9) and Medical Ethics (year 10).

Please see Mrs Reece for further details.

PSHE (Personal, Social, Health and Economic Education)

In this subject students will gain valuable knowledge, understanding and skills to help them prepare for the opportunities, responsibilities and experiences of life.

The subject is taught through a number of units of work which include:

1. Drugs, Alcohol and County lines
2. Mental and physical wellbeing
3. Healthy and Unhealthy relationships, consent & pornography
4. Sexual Health
5. Addressing extremism and radicalism
6. Independence/ preparing for the future

Students will learn through discussion and practical exploration of important themes and issues. They will be given opportunities to test out their views and beliefs in a safe environment. The subject includes sex and relationships education as well as forming part of students' careers education.

Assessment

Scenario based tasks & oracy assessments

**Qualification Level:
Compulsory lesson**

Non-examination course

**Contact Teacher:
Mr S Nicholson**

s.nicholson@arnewood.hants.sch.uk

Sixth Form Study & Careers

Both subjects provide valuable transferable skills for further study in the Sixth Form at The Arnewood School. Employers welcome students who are able to engage in these topics as part of work placements or future employment.



Course Outline

The aim of the Art course is to encourage students to work independently, responding in a personal way to a given theme. Their ideas should be a response to their experiences and environment. Visits are offered to galleries in the locality and London. Students will experience a wide range of art materials and processes, together with some knowledge of contemporary and historical art and design. Students opting for Art and Design should have a commitment to, and love of, the subject and feel motivated to develop visual language and express ideas by working through projects and assignments.

At Arnewood we study unendorsed art, which could include:

- 3D Fine Art
- Graphics Photography
- Illustration Textiles

When considering whether Art is the right option to take, students and parents need to be aware of the following:

- Students will be expected to attend workshops after school
- This course suits students who are able to work independently
- Students will be expected to buy an A3 sketchbook
- Students are advised to buy an Art pack.

Assessment

Coursework – 60% of the marks

The single coursework unit should include preparatory work, sketch books, logs or journals related to the final piece(s). All assessment objectives must be met in the coursework as a whole.

Controlled Test – 40% of the marks – 10 hrs

Candidates will be required to respond to one starting point. A response to all objectives is required.

Starting points will be set by Edexcel controlled conditions. Candidates will be expected to develop their own work to resolve their investigations, producing a final piece or pieces based upon preparatory studies and research.

Qualification Level:
GCSE
Pathway 1 and 2

Examination Authority:
Edexcel

Contact Teacher:
Mrs K Watson
ki.watson@arnewood.hants.sch.uk

Sixth Form Study & Careers
Art and/or Photography,
AS and A Level.

This course will be suitable for careers in graphic design, illustration, fine art, fashion and textiles, architecture, interior design, film and photography, animation and advertising.



Course Outline

In Year 9

Students will be offered an introduction to the Childcare course, which will prepare them for year 10 and 11. They will study health, safety and hygiene; books with children; science and music activities with children and investigate Forest schools. There will be a mixture of practical activities and written studies. At the end of the year the students will be expected to complete an independent research task about childcare settings.

In Year 10 and 11

CACHE level 1/2 Technical Award in Child Development and Care in Early Years

This qualification is graded level 1 pass/merit/distinction and level 2 pass/merit/distinction/distinction* (equivalent to GCSE grades 8.5 to 1)

The Level 2 Award in Childcare is a study of the childcare sector, child development and ways to support development and wellbeing. Qualification structure includes 9 content areas:

1. Child development
2. Factors that influence the child's development
3. Care routines, play and activities to support the child
4. Early years provision
5. Legislation, policies and procedures in the early years
6. Expectations of the early years practitioner
7. Roles and responsibilities within early years settings
8. The importance of observations in early years childcare
9. Planning in early years childcare

Assessment

L2 –CACHE assessment tasks internally and externally moderated and one external exam.

Qualification Level:
NCFE CACHE level 1/2
Pathway 1 and 2

Examination Authority:
CACHE

Contact Teacher:
Miss Chubb

s.chubb@arnewood.hants.sch.uk

Sixth Form Study & Careers
NCFE CACHE level 2 diploma for early years practitioner. Progression onto a Level 3, university and within the sector. Careers include working within the childcare sector such as nurseries, preschools and schools.



COMPUTER SCIENCE

Course Outline

A modern course for a modern world

This is a course that has real relevance in our modern world. Students who select GCSE Computer Science will gain an in-depth understanding of how computer technology works and a look at what goes on “behind the scenes”. As part of this, they will investigate computer programming.

The fun of computer science

Through this study of computer programming, the course will help students develop critical thinking, analysis and problem solving skills. It is a fun and interesting way to develop these skills, which can be transferred to other subjects and even applied in day-to-day life. In this way, the course will stimulate interest and engagement with technology and technology related careers.

About the course

The course will be a mixture of practical work through computer programming, problem-solving using logical methodologies and theory of computer architecture and networking. Over the two years of the course students will complete three areas of study:

- Computer systems
- Data representation and programming

Assessment

Paper 1 exam (50% of the final grade). Written paper.
Paper 2 exam (50% of the final grade). Written paper.

Qualification Level:
GCSE / Pathway 1

Examination Authority:
AQA

Contact Teacher:
Mr E McCrea
e.mccrea@arnewood.hants.sch.uk

Sixth Form Study & Careers

World of Work: Looking to the future (Higher study and the world of work)
Information technologies continue to grow in importance, which will lead to a greater demand for professionals qualified in this area. If learners want to progress to higher study and employment in the field of Computer Science this course provides a superb stepping stone. Students who study GCSE Computer Science and progress to study the subject at A Level or university will have a sound underpinning knowledge of this subject.



Course Outline

The BTEC Construction course (equivalent to 1 GCSE) is a three-component course, consisting of controlled assessments and a 1 hour 30 minute examination.

Students will cover work in the following areas through practical work, site visits, case studies and controlled assessments:

- Construction Technology - exam
- Construction in Practice - practical unit
- Construction and Design

Students need to complete all units at either Pass, Merit or Distinction level. A Distinction equates to a 7 grade at GCSE, a merit equates to a 6, and a Level 2 Pass equates to a grade 4/5.

There is one practical unit where students will experience carpentry and joinery and students also need to submit written/portfolio evidence. Site visits will be organised to support students learning.

Please note places on this course are limited. The technology team may recommend alternative courses for some individuals.

Assessment

Controlled assignments x 2
Examinations x1

Qualification Level:
BTEC First Certificate
Pathway 2

Examination Authority:
Edexcel

Contact Teacher:
Mr P Clarke

p.clarke@arnewood.hants.sch.uk

Sixth Form Study & Careers
Computer Science and I-Media
BTEC National
Extended Certificate
This course is equivalent to one
GCE A levels.
Suitable for careers in construction
management, surveying, trade
apprenticeships, architecture and
structural engineering.



Course Outline

The aim of the 3D Design course is to inspire students' creativity while problem solving through design. The course offers the opportunity to work with different materials and develop knowledge of different techniques and practices. With a specific focus on designing and making for film, television and theatre. . There is the opportunity to study a wide range of contemporary and historical designers and design eras.

In 3D Design students must show creativity, motivation and a love of designing. This course would suit students who are able to work independently.

The components of the course will entail design and make tasks:

Assessment criteria:

- Develop ideas through investigations
- Exploring Ideas through experimenting with materials and techniques
- Recording ideas, observations and insights as work progresses.
- Presenting a personal and meaningful response

Assessment

Component 1

- A single design and make task chosen from a theme with a portfolio.
- 60% of GCSE

Component 2

- A response to an externally set assignment.
- Preparatory period followed by 10 hours of supervised time.
- 40% of GCSE

Qualification Level:
GCSE
Pathway 1 and 2

Examination Authority:
AQA

Art and Design: Three Dimensional
Design.

Contact Teacher:
Mr P Clarke

p.clarke@arnewood.hants.sch.uk

Sixth Form Study & Careers

3D Design at A Level.

This course would be suitable for careers in designing, engineering, architecture, graphic design, product design, fashion, furniture making, TV/Film set building, computer design, and other technology-based careers.



DRAMA

Course Outline

Students taking Drama can expect a course which is varied and stimulating as well as challenging. The syllabus tests a number of skills: besides acting ability, students must demonstrate that they can research a role or topic, work well in a group, manage their time effectively, reflect upon and evaluate their own work and that of others, and analyse live productions. The assessment of the course includes both practical and written elements.

Drama is challenging and extremely rewarding and students can expect to gain much in terms of self-confidence and teamwork skills, as well as developing their dramatic ability and understanding of theatre and performance.

The study of Drama equips students with confidence and a high level of skill in verbal communication, essential in so many future careers.

Throughout the course students will be expected to perform in front of live audiences, both individually and as part of a group. When working on a practical assessment, students will also be expected to attend after school rehearsals. Students must attend a minimum of two live performances throughout the course.

Universities and employers look favorably upon students who can demonstrate a wide range of skills, and Drama can contribute much towards developing confidence, creativity and skills in teamwork and communication for those who are prepared to work hard at it. It does, however, demand a sensitive and considered approach as the success of group work depends upon the concentration and commitment of every student.

Assessment

Component 1: Devising drama	30% of total GCSE
Component 2: Presenting and performing texts	30% of total GCSE
Component 3: Drama: Performance and response	40% of total GCSE

Qualification Level:
GCSE
Pathway 1 and 2

Examination Authority:
OCR

Contact Teacher:
Mrs K Watson
ki.watson@arnewood.hants.sch.uk

Sixth Form Study & Careers
Drama and Theatre Studies, BTEC
Performing Arts, AS and A Level.
It is suitable for creative careers,
theatre, teaching. Any career
which involves communicating,
working as a team or presenting.



FOOD PREPARATION AND NUTRITION

Aims and learning outcomes

The GCSE specification in Food Preparation and Nutrition aims to equip students with the knowledge, understanding and skills required to cook and apply the principles of food science, nutrition and healthy eating. Learning to cook will enable them to make informed decisions about a wide range of further learning opportunities and career pathways, as well as develop vital life skills that enable them to feed themselves and others affordably and nutritiously.

In studying cooking and nutrition, students must:

- demonstrate effective and safe cooking skills by planning, preparing and cooking, using a variety of commodities, techniques and equipment.
- develop knowledge and understanding of the functional properties and chemical processes as well as the nutritional content of food and drinks.
- understand the relationship between diet, nutrition and health, including the physiological and psychological effects of poor diet and health.
- understand the economic, environmental, ethical, and socio-cultural influences on food availability, production processes, diet and health choices.
- demonstrate knowledge and understanding of functional and nutritional properties, sensory qualities and microbiological food safety considerations when preparing, processing, storing, cooking and serving food.
- understand and explore a range of ingredients and processes from different culinary traditions (traditional British and international), to inspire new ideas or modify existing recipes.

Assessment

1 x 1hr 30min exam - 50% of total marks
NEA Tasks (research and practical) - 50% of total marks

Qualification Level:
GCSE
Pathway 1 and 2

Examination Authority:
AQA

Contact Teacher:
Miss M Craft
m.craft@arnewood.hants.sch.uk

Sixth Form Study & Careers
Careers in the catering industry,
home economists in the food
industry, health visitors,
dieticians, complimentary to
careers in fitness.



HEALTH AND SOCIAL CARE

Course Outline

The Level 1/2 Award in health and social care will equip students with knowledge of people, beginning with birth and the journey through life.

This qualification links to future careers involving working and communicating with others such as;

Nursing
Midwifery
Social Worker
Police
Carer
Physiotherapy

BTEC Level 2 Award in health and social care is a study of and includes the following components:

- Human Lifespan
- Health and social services and care values
- Health and Wellbeing – Exam unit

BTEC Level 2 Award in health and social care is the equivalent to 1 GCSE. Students need to complete all units at either Pass, Merit or Distinction level. A Distinction equates to a 7 grade at GCSE, a merit equates to a 6, and a L2 Pass equates to a grade 4/5.

Assessment

Three externally moderated assessments and one written exam

Qualification Level:
BTEC Award Level 1/2
Pathway 2

Examination Authority:
Edexcel

Contact Teacher:
Miss Chubb
s.chubb@arnewood.hants.sch.uk

Sixth Form Study & Careers
BTEC Level 3 Certificate in Health
and Social Care
BTEC Level 3 Diploma in Health
and Social Care
Progression onto University
or working within the care
sector where there may be an
opportunity to continue training
within the work environment.



Course Outline

Students selecting I-Media as a KS4 option will be taking a vocational course in creative technology. This is taught through five 1 hour lessons a fortnight. The successful candidate will achieve the equivalent of 1 GCSE.

This course is an ideal preparation for a technological world in which ICT touches every part of our daily lives. The course will develop creative ICT media skills and an understanding of I-Media in the media rich world of today.

This course is based on one exam and a number of practical coursework units. Units include audio, animation and graphics. In the audio unit the students research and create radio advert. In the animation unit the students research and create an animation using Macromedia Flash. In the graphics unit students construct a multi-layered poster for a given scenario.

Throughout these units the students will be taught the fundamentals of the design process. They will learn the importance of project management and time management and combine both collaborative and independent skills in order to complete their tasks. All skills are highly desirable in most careers and will stand them in good stead for the future, whether that be to go onto university or into the workplace and apprenticeships.

The course has a high pass rate; since the course has been running 95% of students or more in any one year have passed the course gaining a Pass grade, equal to a GCSE grade 5 or better, including 6, 8 and 9 grades.

Sixth Form Study & Careers

TCGI and Computer Game Design, ICT or Computing. Special access to Portsmouth and Solent Universities. Practical skills in Animation, CGI, Computer Game Design, 3D Modelling and Rigging. This will support careers in Gaming, TV, Film, Engineering, Architecture, Aviation, Automotive as well as any other industries that produce prototypes.

Please note: As courses change over time due to the requirements of exam boards. Exam boards and the assessment of any course may be modified.

Qualification Level:
OCR: Cambridge National
Level 2 Certificate
Pathway 1 and 2

Examination Authority:
OCR

Contact Teacher:
Mr S Jaggar
s.jagggar@arnewood.hants.sch.uk

Assessment
1 exam.
A number of units of
coursework.



MEDIA STUDIES

Course Outline

The Media Studies course enables students to pursue a range of academic interests and disciplines within the scope of a subject that is of increasing relevance to the world we live in. Taken as an 'enrichment' subject or as a pathway into a particular career path, Media Studies complements a range of other subjects, particularly English, Art and ICT.

The course offers rigorous but accessible learning on a subject that students find to be engaging, creative and fun, including:

- The chance to study across a range of different Media including Music Video, TV, Film, The Press, Social Media and Advertising;
- Extensive and meaningful coverage of media theory and up-to-date media practice and technologies;
- Practical work which integrates theories and concepts;
- Opportunities to learn about real media products and industries.

Assessment

Paper 1 (Written Examination worth 35% of GCSE)- 1 hour 30 minutes

This exam assesses student understanding of Media Language, Industries, Audiences and Representations, focusing on a range of online and print texts, as well as music video. Students complete a mixture of multiple choice, short answer and extended response questions.

Paper 2 (Written Examination worth 35% of GCSE)- 1 hour 30 minutes

This examination focuses on Media Language and is focused on students' ability to analyse media texts (close-study products) studied in advance of the exam. Section A will be based on a screening from an extract of a television Close Study text. Section B will be based on either newspapers or online, social and participatory media and video games. Non examination assessment (30% of GCSE)

Qualification Level:
GCSE
Pathway 1 and 2

Examination Authority:
AQA

Contact Teacher:
Mr N Jibson
n.jibson@arnewood.hants.sch.uk

Sixth Form Study & Careers
Media Studies, AS and A Level.
This is suitable for careers in marketing, Journalism, Television Production, Advertising and other media-related occupations.



Course Outline

The Music course is split into three components. These are:

Performing: A minimum of two pieces, lasting between 4 – 6 minutes. One of these pieces must be an ensemble performance of at least one minute duration. The other piece(s) may be either solo and/or ensemble. One of the pieces performed must link to an area of study of the learner's choice.

Composing: Two compositions, one of which must be in response to a brief set by Eduqas. Learners will choose one brief from a choice of four, each one linked to a different area of study. The briefs will be released during the first week of September in the academic year in which the assessment is to be taken. The second composition is a free composition for which learners set their own brief.

Appraising: This component is assessed via a listening examination.

Eight questions in total, two on each of the four areas of study.

Area of study 1: Musical Forms and Devices; Area of study 2: Music for Ensemble; Area of study 3: Film Music; Area of study 4: Popular Music.

If students like the thought of exploring music at all levels, composing their own musical ideas, listening to many styles of music and developing their instrumental and/or vocal abilities, then Music is a good choice of subject.

Assesment

Coursework - 60% of total marks:

- 1 ensemble recording (instrument or voice)
- 1 solo/ensemble recording (instrument or voice)
- 2 compositions (one free, one to a brief)

Listening exam - 40% of total marks:

- Students will be required to answer eight questions in total, two on each of the four areas of study.

Qualification Level:
GCSE
Pathway 1 and 2

Examination Authority:
Eduqas

Contact Teacher:
Mr M Byles

m.byles@arnewood.hants.sch.uk

Sixth Form Study & Careers
BTEC Performing Arts, AS and
A Level Music, BTEC Music
Technology. Suitable for careers in
performing arts, media, gaming,
teaching, working in the creative
arts, and careers requiring self-
discipline and preparation, such
as law.



PHYSICAL EDUCATION

Course Outline

The Physical Education course offers students the opportunity to develop skills in a wide range of sports and activities and helps to improve personal performance. For students who find pleasure in sport, this will therefore be a very enjoyable course. Students receive 5 lessons per fortnight, which will be a mixture of both practical and theory lessons. The two exams at the end of the course will make up 60% of the overall grade and will test knowledge and understanding of the theory element of the course. The first exam (component 1) will be 1 hour and 15 minutes and will test knowledge related to Fitness and Body Systems. The second exam (component 2) will also be 1 hour and 15 minutes and will test candidates' knowledge on Health and Performance. Both exams will involve a variety of multiple choice, short answer and longer essay-styled questions.

The final practical mark is worth 40% of the total grade and students need to offer three practical activities for assessment as a player/performer. Alongside their practical assessments, students will need to complete a written analysis of performance on one of their three sports.

Prerequisite: Students wishing to study GCSE Physical Education will be expected to be showing commitment to school extra-curricular PE clubs and representing the school in competitive sport. In addition to this, students should be taking part in competitive sport outside of school.

Assessment

Theory exams x 2 - 60% of total marks, practical performance – 40% of total marks, including a written analysis of performance.

Qualification Level:
GCSE

Examination Authority:
AQA

Contact Teacher:
Mrs M Elliott
m.elliott@arnewood.hants.sch.uk

Sixth Form Study & Careers
BTEC Sport Level 3; Physical Education, AS and A Level
This subject will support careers in the sport and leisure industry, travel and tourism, and teaching.



RELIGION, PHILOSOPHY AND ETHICS

Course Outline

It is impossible to fully understand the world in which we live without an appreciation of the impact of religion and belief. Following a Religion, Philosophy and Ethics course will enable students to study and explore what people believe, both secular and religious.

We have chosen a course which is relevant, engaging and challenging for students. Some of the topics studied include:

- Questions about the existence of God
- The death penalty
- Abortion and euthanasia
- Relationships
- The problem of evil
- Death and the afterlife
- Human rights
- The use and abuse of animals
- Religious Persecution
- Marriage and divorce

Students are expected to think, discuss and reflect upon a wide range of questions raised by these issues over the three years. The course aims to give all students the confidence to express their opinions in a supportive environment, and the ability to listen to others and take their views into consideration. It provides students with the insight that can work to challenge stereotypes, promote cohesion and tackle extremism. We enjoy having speakers into our lessons who are experts in their field to discuss issues with us.

There will be a focus on two world religions. We have chosen Christianity and Buddhism. Here you will study a unit on key beliefs and practices.

This course will provide valuable skills to study this subject at A Level here at The Arnewood School. Please come and chat with us if you would like further information.

Assesment

2 Written Examinations (1 hour 45 minutes each)

Qualification Level:
GCSE
Pathway 1 and 2

Examination Authority:
AQA

Contact Teacher:
Mrs A Reece
a.reece@arnewood.hants.sch.uk

Sixth Form Study & Careers
Religion, Philosophy and Ethics, A Level at The Arnewood School
This course develops the skills that support careers in social services, medicine, politics, nursing, teaching and the caring professions. Complementary to any of the other subjects and careers.

TEXTILES AND FASHION DESIGN

(CANNOT BE TAKEN IN COMBINATION WITH ART AND DESIGN OR 3D DESIGN)

Course Outline

This is an option for students with an interest in Textile Design and Fashion. GCSE Textiles is a vibrant and dynamic course which teaches skills such as weaving, felting, stitching, appliqué, construction methods, and printing. We will look at Fashion and Costume Design as part of the course. Textiles Design gives students the freedom to express themselves using a wide variety techniques and materials producing 2D and 3D work. Students will produce a creative sketch book full of Textile samples, drawings and they will document the work of influential artists/designers relating to their work. This course is for students who have imagination and a curiosity to explore colour, pattern and design.

In studying Textiles and Fashion Design:

- Students are expected to work with enthusiasm and be self-motivated. There will be a large proportion of independent work and creative visual research.
- Students will be required to think independently and create a personal response linked to the given theme.
- Successful students will be prepared to experiment and explore the different possibilities within textiles, keeping an open and creative mind.
- Students will be expected to research and explore artists/designers for inspiration, take their own photographs and then experiment with materials and techniques to develop individual ideas towards a final piece. Documenting their ideas as they progress.
- Students will apply a creative approach to problem solving; consider and develop original ideas from initiation to realisation; analyse critically their own work and the work of others; express individual thoughts and choices confidently.

Assessment

60% Coursework – 2 Units of work (personal response final piece and supporting experimentation sketchbooks for each unit)

40% Exam - in year 11 (10 hour practical/making task and sketchbook).

For both exam and course work, students will be tested on their ability to record information visually, research relevant designers and experiment.

Qualification Level:
GCSE

Examination Authority:
AQA

Contact Teacher:
Mrs K Dave
k.dave@arnewood.hants.sch.uk

Sixth Form Study & Careers
Careers in Costume, Fashion,
Footwear Design, Accessory
Design, Textile Design, Interior
Design, Theatre Design, Jewellery
Design and construction.



BIOLOGY, CHEMISTRY, PHYSICS

Course Outline

This is an option available to all students with a passion and aptitude for science. The course is made up of 3 GCSEs in each of Biology, Chemistry and Physics. All three courses provide a strong foundation for studying that subject at A level. This course is taken instead of Combined Science.

Biology provides students with the opportunity to gain a good understanding of:

- Human biology
- Organisms
- Evolution
- The environment.

Chemistry provides students with the opportunity to gain a good understanding of:

- The nature of substances and how they react together
- How our knowledge of chemistry is used in business and industry
- How our use of raw materials as fuels in manufacturing can affect the local and global environment.

Physics provides students with the opportunity to gain a good understanding of:

- The use and transfer of energy
- Waves, radiation and space
- The application of Physics

Assessment

Assessment is by terminal examinations only. There are 6 papers, 2 Biology, 2 Chemistry and 2 Physics. Each will assess knowledge and understanding from distinct topic areas. Each exam lasts for 1hr 45.

Qualification Level:
GCSE
Pathway 1

Examination Authority:
AQA

Contact Teacher:
Mr J. McGregor

j.mcgregor@arnewood.hants.sch.uk

Sixth Form Study & Careers

Biology, Chemistry and
Physics, AS and A Level.

This will support a range of careers,
such as Medicine, Engineering,
any career that requires logical
thinking.



If you have any further questions please contact Tim Merrick
t.merrick@arnewood.hant.sch.uk

For subject contact details, GCSE subject details on firefly or
Option Forms please see the school website or follow these
links:

GCSE Subject information (Firefly)

<https://arnewood.fireflycloud.net/year-8/gcse-options/gcse-option-subject-information>

Options Form (Firefly)

<https://arnewood.fireflycloud.net/year-8/gcse-options/options-form>

The Arnewood School website

<https://www.arnewood.hants.sch.uk/key-stage-4-options/>



THE ARNEWOOD SCHOOL

AMBITION | SUCCESS | TOGETHER